

June 2024



Dear Neighbor,

We are writing to notify you that Kerr McGee Oil & Gas Onshore, LP, an Oxy USA Inc. subsidiary, will soon begin the next phases of developing oil and natural gas wells within 2,000 feet of your home or property. In our commitment to being a good neighbor, we provide frequent and transparent information, seek community feedback, safeguard the environment, and protect the health and safety of employees and communities.

Work activity, location, and schedule

Enclosed, you will find information about the phases of energy development and our well locations. Please visit our website for more information on oil and natural gas development.

ACACIA 13-17HZ work activities are planned in two stages, separated by intermissions. The first stage's estimated work schedule is shown below. Our team will continue to provide information regarding schedule updates and work activities happening at the location.

Phase	Work Activity	Estimated Start	Estimated End
1	Prepare location and install mitigations	Late July 2024	Early Sept 2024
2	Drill and install surface casing to protect groundwater	Sept 23, 2024	Early Oct 2024
3	Horizontal drilling	Mid-Oct 2024	Late Nov 2024
4 - 6	Well completions, facility construction, and interim reclamation	We will send additional notices before starting phases 4 through 6.	

For up-to-date information on timing, please visit [www.OxyColoradoStakeholder.com/project-updates](http://www.OxyColoradoStakeholder.com/project-updates).

Standard practices and mitigation strategies

Our standard practices align with the guidelines of the Town of Keenesburg, Weld County, the Energy & Carbon Management Commission (ECMC), and the Colorado Department of Public Health and Environment (CDPHE). We carefully planned this location's development and mitigation techniques to minimize any temporary impacts from our operations. Currently, mitigations during development include a robust traffic management plan and continuous sound and air monitoring.

To access the most up-to-date information on current projects, please visit the "Project Updates" tab at [www.OxyColoradoStakeholder.com/project-updates](http://www.OxyColoradoStakeholder.com/project-updates)

Sincerely,

**Oxy Stakeholder Relations**

1099 18th Street, Suite 700 Denver, CO 80202

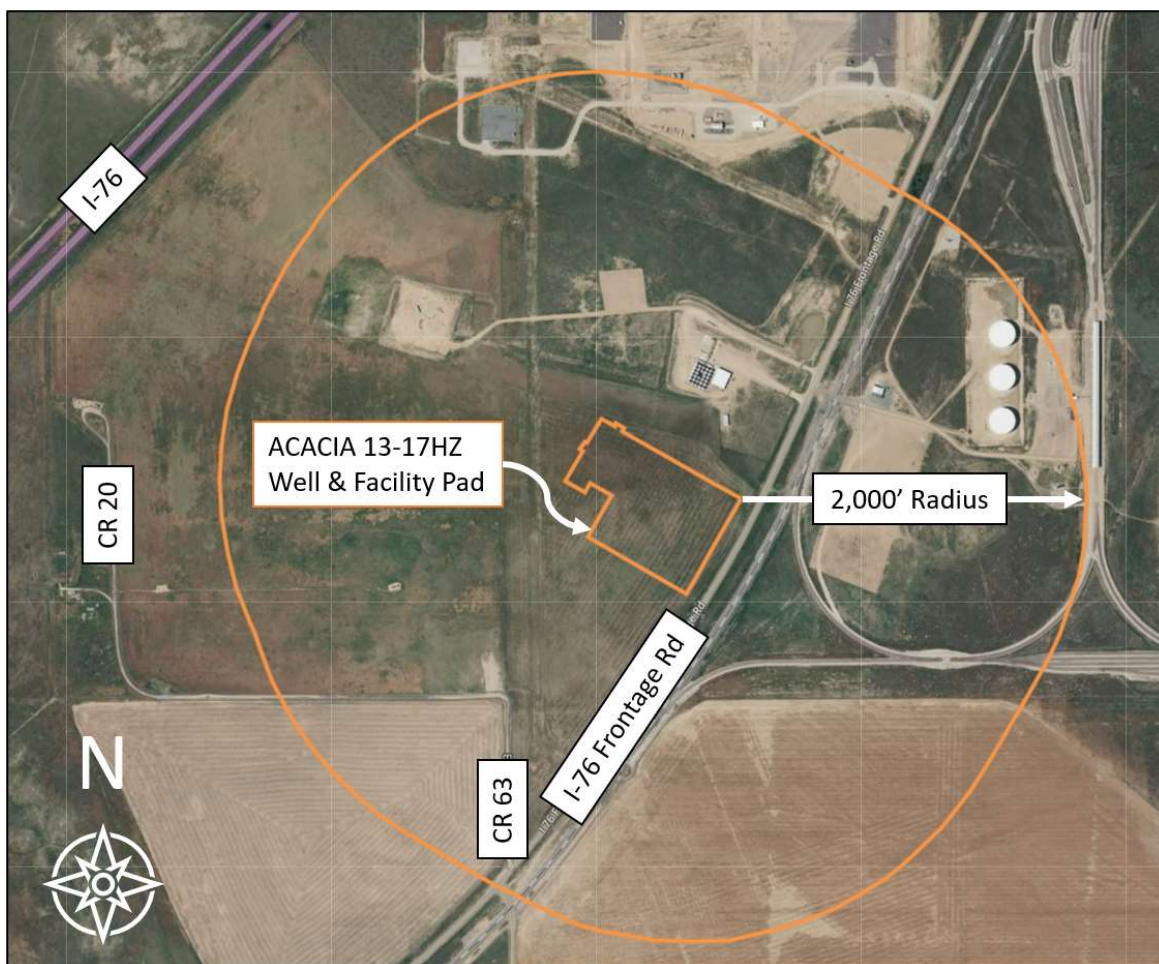
866.248.9577

[ColoradoStakeholder@oxy.com](mailto:ColoradoStakeholder@oxy.com)

[www.OxyColoradoStakeholder.com](http://www.OxyColoradoStakeholder.com)

## AREA OF OPERATION

### ACACIA 13-17HZ



<b>Location:</b>	I-76 Frontage Road & County Road 63, Weld County, CO
<b>Parcel #:</b>	130317300021
<b>Cross Streets:</b>	I-76 Frontage Road & County Road 63
<b>Legal:</b>	Township 2 North, Range 63 West SW/4 SW/4 Section 17 Keenesburg, Colorado
<b>Pad Description:</b>	ACACIA 13-17HZ, 16 wells
<b>Weld County Permit #:</b>	1041OGLA23-0001
<b>ECMC Permit ID:</b>	403441234
<b>Weld County Oil and Gas Energy Department:</b>	Stephanie Frederick
	1301 N. 17th Avenue, Greeley, CO
	sfrederick@weldgov.com   970.400.3581
<b>Town of Keenesburg Public Works</b>	Keenesburg, CO 80643   303.732.4281
<b>Energy &amp; Carbon Management Commission:</b>	<a href="https://ecmc.state.co.us">https://ecmc.state.co.us</a>   303.894.2100

For more information on oil and natural gas development or project updates, please visit [www.OxyColoradoStakeholder.com](http://www.OxyColoradoStakeholder.com)



# Phases of Energy Development



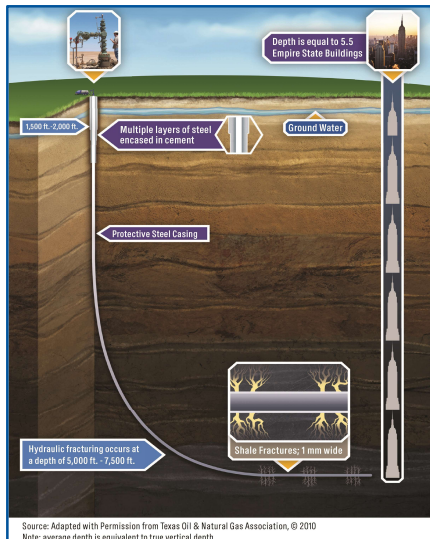
For more information, please visit [www.OxyColoradoStakeholder.com/oil-and-gas-101](http://www.OxyColoradoStakeholder.com/oil-and-gas-101)

## Pad Construction (30-45 days per pad)



Standard construction equipment prepares the well site. A wall may be installed to reduce or minimize noise and light during development.

## Horizontal Drilling (4-6 days per well)



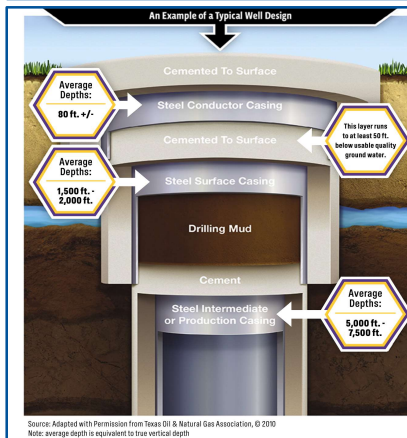
A production rig arrives and drills to a depth of 7,000 to 8,000 feet. The horizontal portion of the wellbore can extend more than two miles. Additional layers of protective steel casing and cement are installed.

## Production Facility Construction (30-45 days per facility)



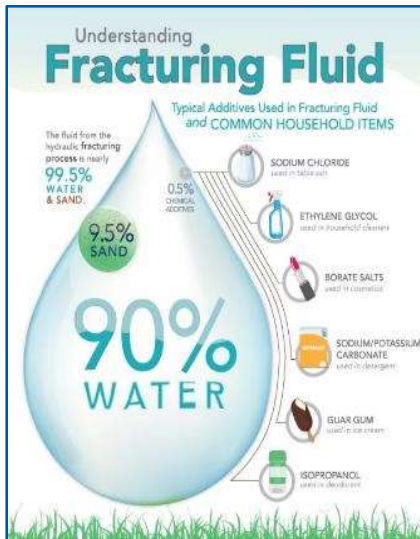
Production facilities are constructed adjacent to the wells to collect and separate the oil, natural gas, and water that are produced. Facility production is 30-45 days of work, completed in stages over about four months.

## Surface Casing Set (1-2 days per well)



A drilling rig begins the underground construction process by installing steel pipe and cement (surface casing) to protect groundwater. Surface casing is set at least 50' below the aquifer, typically about 1,500+' below the surface.

## Well Completions (6-9 days per well)



**Hydraulic Fracturing:** A safe, highly engineered technology developed in the 1940s. Fluid is pumped over a mile below the earth's surface under pressure to create hairline fractures in the rocks.

**Flowback:** After fracturing, the wells are opened, and oil and gas flow into the mobile production facility.

**Well clean-out and Tubing:** The wells are cleaned out to remove excess sand and install the production tubing.

## Reclaim Well Site (60 days per pad)



Once development phases are complete, the pad is reclaimed to the largest extent possible to match the existing landscape. Each well will produce energy vital to the health and welfare of our communities for decades to come.