

July 30, 2024



Dear Neighbor,

We are writing to notify you that Kerr McGee Oil & Gas Onshore, LP, an Oxy USA Inc. subsidiary, will soon begin the next phases of developing oil and natural gas wells within 2,000 feet of your home or property. In our commitment to being a good neighbor, we provide frequent and transparent information, seek community feedback, safeguard the environment, and protect the health and safety of employees and communities.

Work Activity, Location, and Schedule

Enclosed, you will find information about the phases of energy development and our well locations. Please visit our website for more information on oil and natural gas development.

Below is a summary of the planned work and the estimated schedule.

Phase	Work Activity	Estimated Start	Estimated End
1-3	Construction, Casing, and Drilling	Completed	
4	Well Completions	Mid-September 2024	Mid-November 2024
5	Facility Construction	Late July 2024	Late October 2024
6	Interim Reclamation	Late October 2024	Early Spring 2025

For up-to-date information on timing, please visit:  
[www.OxyColoradoStakeholder.com/project-updates](http://www.OxyColoradoStakeholder.com/project-updates).

Standard Practices and Mitigation Strategies

Our standard practices align with the guidelines of Weld County, the Energy & Carbon Management Commission (ECMC), and the Colorado Department of Public Health and Environment (CDPHE). We carefully planned this location's development and mitigation techniques to minimize any temporary impacts from our operations. Currently, mitigations during development include a robust traffic management plan, sound wall installation, and continuous sound and air monitoring.

Please feel free to call our Response Line at 1.866.248.9577 for additional questions, comments, or feedback.

Sincerely,

**Oxy Stakeholder Relations**

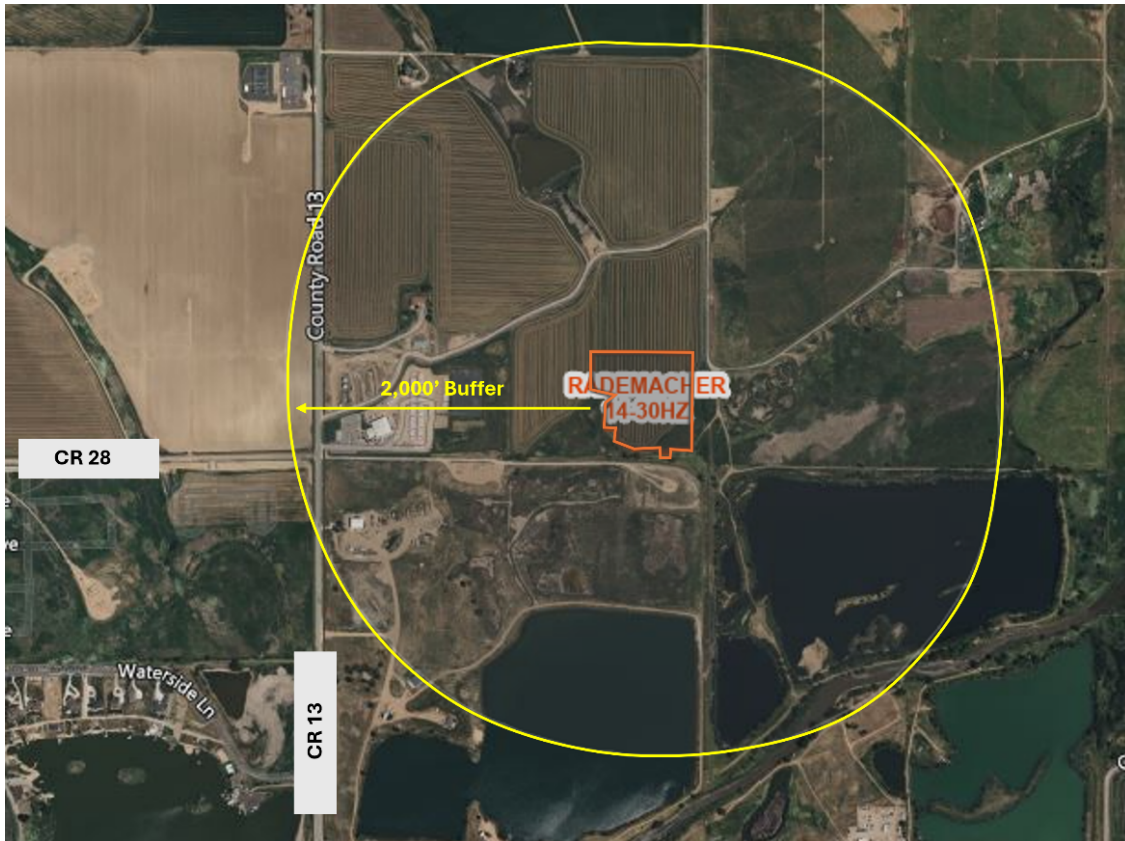
1099 18th Street, Suite 700 Denver, CO 80202

866.248.9577

[ColoradoStakeholder@oxy.com](mailto:ColoradoStakeholder@oxy.com)

[www.OxyColoradoStakeholder.com](http://www.OxyColoradoStakeholder.com)

**AREA OF OPERATION**  
**RADEMACHER 14-30HZ PAD S**



<b>Location:</b>	County Road 28 & County Road 13, Weld County, CO
<b>Parcel #:</b>	120930300008
<b>Cross Streets:</b>	County Road 28 & County Road 13
<b>Legal:</b>	Township 3 North, Range 67 West SE/4 SW/4 Section 30 Weld County, Colorado
<b>Pad Description:</b>	RADEMACHER 14-30HZ, 18 Wells
<b>Weld County Permit #:</b>	1041WOGLA23-0013
<b>ECMC Permit ID:</b>	403278425
<b>Weld County Oil and Gas Energy Department:</b>	Stephanie Frederick 1301 N. 17th Avenue, Greeley, CO sfrederick@weldgov.com   970.400.3581
<b>Energy &amp; Carbon Management Commission (ECMC):</b>	<a href="https://ecmc.state.co.us">https://ecmc.state.co.us</a>   303.894.2100

**For more information on oil and natural gas development or project updates, please visit [www.OxyColoradoStakeholder.com](http://www.OxyColoradoStakeholder.com)**

# Phases of Energy Development



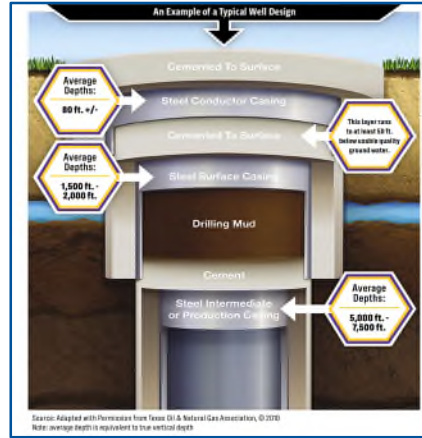
For more information, please visit [www.OxyColoradoStakeholder.com/oil-and-gas-101](http://www.OxyColoradoStakeholder.com/oil-and-gas-101)

## Pad Construction (30-45 days per pad)



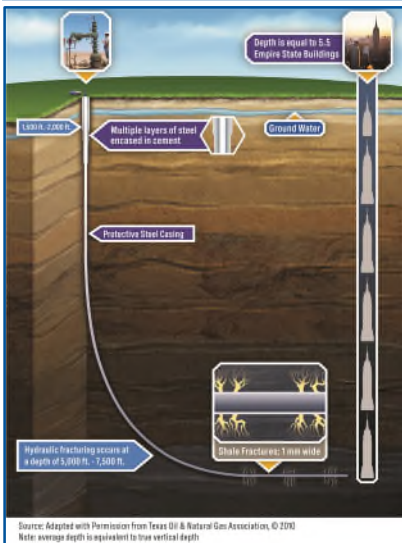
Standard construction equipment prepares the well site. A wall may be installed to reduce or minimize noise and light during development.

## Surface Casing Set (1-2 days per well)



A drilling rig begins the underground construction process by installing steel pipe and cement (surface casing) to protect groundwater. Surface casing is set at least 50' below the aquifer, typically about 1,500+' below the surface.

## Horizontal Drilling (4-6 days per well)



A production rig arrives and drills to a depth of 7,000 to 8,000 feet. The horizontal portion of the wellbore can extend more than two miles. Additional layers of protective steel casing and cement are installed.

## Well Completions (6-9 days per well)



**Hydraulic Fracturing:** A safe, highly engineered technology developed in the 1940s. Fluid is pumped over a mile below the earth's surface under pressure to create hairline fractures in the rocks.

**Flowback:** After fracturing, the wells are opened, and oil and gas flow into the mobile production facility.

**Well clean-out and Tubing:** The wells are cleaned out to remove excess sand and install the production tubing.

## Production Facility Construction (30-45 days per facility)



Production facilities are constructed adjacent to the wells to collect and separate the oil, natural gas, and water that are produced. Facility production is 30-45 days of work, completed in stages over about four months.

## Reclaim Well Site (60 days per pad)



Once development phases are complete, the pad is reclaimed to the largest extent possible to match the existing landscape. Each well will produce energy vital to the health and welfare of our communities for decades to come.