



November 1, 2024

Dear Neighbor,

We are writing to notify you that Kerr McGee Oil & Gas Onshore LP, an Oxy USA Inc. subsidiary, is preparing to submit an application for a Weld County Oil and Gas Location Assessment (WOGLA) for a project in your community. In our commitment to being a good neighbor, we provide frequent and transparent information, seek community feedback, safeguard the environment, and protect the health and safety of employees and communities.

#### Description of the project

The proposed PARSNIP FED HZ project, as described in the following pages, consists of 22 oil and natural gas wells and a production facility. The timeline for development is based on obtaining the required permits and drilling rig availability. At this time, we estimate that initial drilling of the first stage will start June 2026. However, we commit to keeping you updated throughout the permitting process and providing a detailed timeline before beginning construction. You can find project updates at [www.OxyColoradoStakeholder.com/project-updates](http://www.OxyColoradoStakeholder.com/project-updates).

#### Standard practices and mitigation strategies

Our standard practices align with the guidelines of Weld County, the Energy & Carbon Management Commission (ECMC), and the Colorado Department of Public Health and Environment (CDPHE). We carefully planned this location's development and mitigation techniques to minimize any temporary impacts from our operations. Currently, mitigations during development include a robust traffic management plan, the installation of sound walls, and continuous sound and air monitoring. Note: The ECMC was known as the Colorado Oil and Gas Conservation Commission (COGCC) prior to July 2023.

Our team members will continue to work diligently to plan construction and operations with you in mind. We welcome your feedback and can be contacted anytime for questions and comments by email, phone, or mail. We will also consider all reasonable mitigation measures proposed to minimize adverse impacts of the proposed oil and gas location.

#### Next steps

This project must undergo a comprehensive permitting process at both the local and state level. We will keep our website updated, and you will be notified by mail throughout the process. Please reach out to us or Weld County to discuss this project or to set up a meeting. We look forward to working with you.

#### **Oxy Stakeholder Relations**

1099 18th Street, Suite 700

Denver, CO 80202

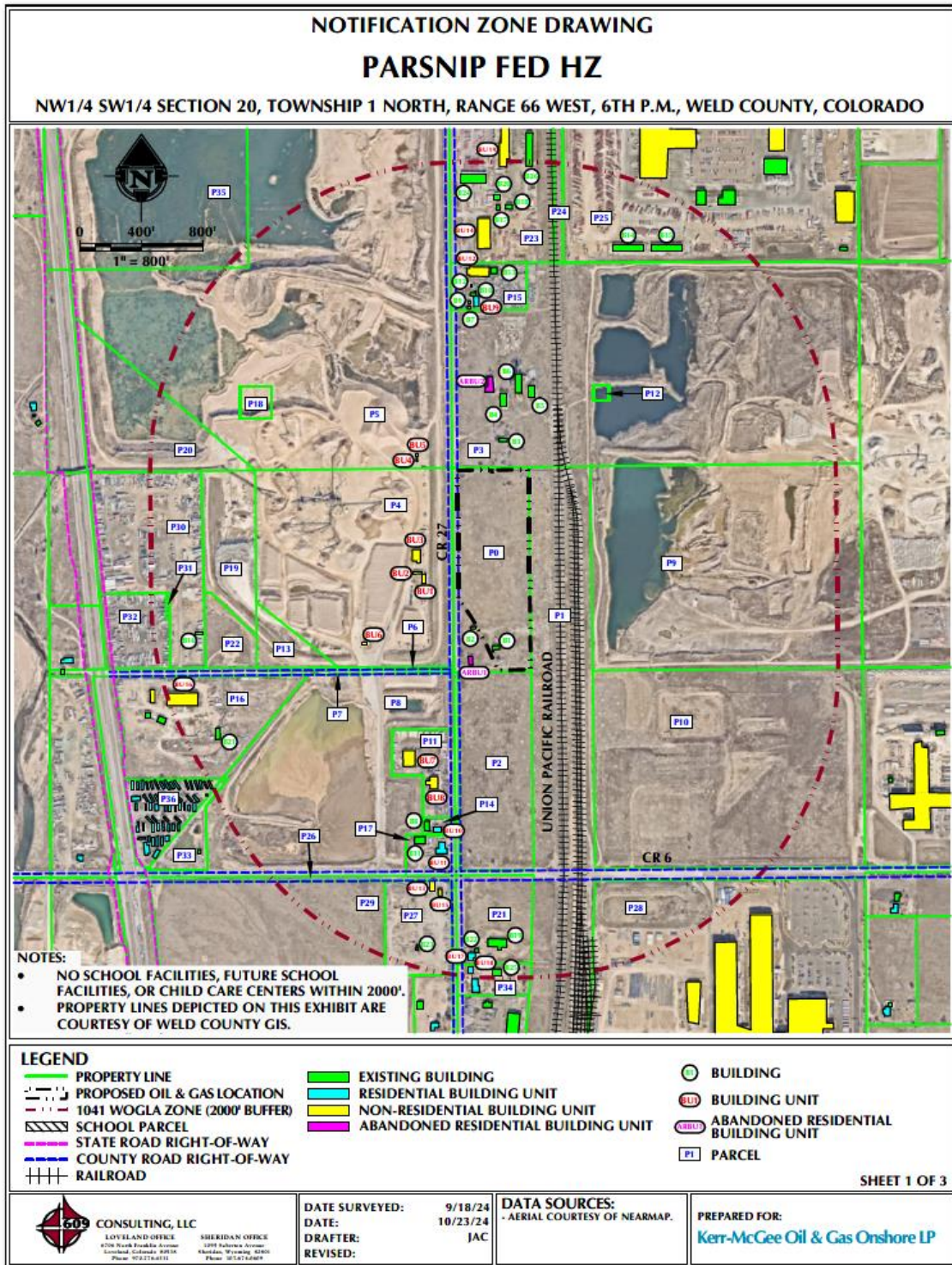
866.248.9577

[ColoradoStakeholder@oxy.com](mailto:ColoradoStakeholder@oxy.com)

[www.OxyColoradoStakeholder.com](http://www.OxyColoradoStakeholder.com)

# New Energy Development

## Project Location



Pad Name	Parcel #	Location	Disturbed Acreage	Operation Acreage
Parsnip Fed HZ	147120300007	NWSW SECTION 20, TOWNSHIP 1 NORTH, RANGE 66 WEST, 6TH P.M., WELD COUNTY, COLORADO	~12.34 ACRES (During development)	~7.9 ACRES (For life of wells)



# Notification Zone



ID	BUILDING UNIT NUMBER	BUILDING UNIT DISTANCE	BUILDING NUMBER	BUILDING DISTANCE	PARCEL #	OWNER	MAILING ADDRESS	MAIL CITY	MAIL STATE	MAIL ZIP
P0	-	-	B1, B2, ARBU1	±0', ±4' SW, ±114' SW	147120300007	HUNT BROTHERS PROPERTIES INC C/O ASPHALT SPECIALTIES CO INC	10100 DALLAS ST	HENDERSON	CO	806408491
P1	INFORMATION NOT AVAILABLE									
P2	-	-	-	-	147120302001	VESTAS NACELES AMERICA INC	1500 E CROWN PRINCE BLVD BLDG N	BRIGHTON	CO	806035886
P3	-	-	B3, B4, B5, B6, ARBU2	±182' N, ±411' N, ±471' N, ±496' N, ±506' N	147120000033	BRANNAN SAND AND GRAVEL COMPANY LLC	2500 BRANNAN WAY	DENVER	CO	802297029
P4	BU1, BU2, BU3, BU6	±209' W, ±237' W, ±246' W, ±662' SW	-	-	147119400002	CITY AND COUNTY OF DENVER BOARD OF WATER COMMISSIONERS	1600 W 12TH AVE	DENVER	CO	802043412
P5	BU4, BU5	±266' W, ±274' W	-	-	147119100002	CITY AND COUNTY OF DENVER BOARD OF WATER COMMISSIONERS	1600 W 12TH AVE	DENVER	CO	802043412
P6	-	-	-	-	147119400020	CITY AND COUNTY OF DENVER BOARD OF WATER COMMISSIONERS	1600 W 12TH AVE	DENVER	CO	802043412
P7	-	-	-	-	147119400021	MARTIN MARIETTA MATERIALS INC C/O BADEN TAX MANAGEMENT	PO BOX 8040	FORT WAYNE	IN	468988040
P8	-	-	-	-	147119000082	THEODORE R. SHIPMAN LIVING TRUST, TRS EQUITIES LLC	8301 E PRENTICE AVE STE 100	GREENWOOD VILLAGE	CO	801112904
P9	-	-	-	-	147120300008	BRANNAN SAND AND GRAVEL COMPANY LLC	2500 BRANNAN WAY	DENVER	CO	802297029
P10	-	-	-	-	147120303001	CLAYTON SUPPLY INC	5000 CLAYTON RD	MARYVILLE	TN	378045550
P11	BU7, BU8	±749' SW, ±793' SW	-	-	147119000073	WAYNE E. & PATRICIA L. MEDLIN	2101 COUNTY ROAD 27	FORT LUPTON	CO	806218311
P12	-	-	-	-	147120200036	BRANNAN SAND AND GRAVEL COMPANY LLC	2500 BRANNAN WAY	DENVER	CO	802297029
P13	-	-	-	-	147119400001	CITY AND COUNTY OF DENVER BOARD OF WATER COMMISSIONERS	1600 W 12TH AVE	DENVER	CO	802043412
P14	BU10	±1085' S	B8	±1075' SW	147119000074	CASSIE WILKINS	2041 COUNTY ROAD 27	FORT LUPTON	CO	806218302
P15	BU9, BU12	±1061' N, ±1256' N	B7, B9, B10, B12, B13	±1045' N, ±1079' N, ±1131' N, ±1193' N, ±1275' N	147120000032	MANUEL & ANITA M. BALDERAS	2732 S DENVER AVE	FORT LUPTON	CO	806218339
P16	BU16	±1803' W	B21	±1765' SW	147119000078	CHARLES E. WINCHESTER	PO BOX 462	BRIGHTON	CO	806010462
P17	BU11	±1168' S	B11	±1179' SW	147119000020	BOWTIE PROPERTIES LLC	PO BOX 1063	BRIGHTON	CO	806011063

ID	BUILDING UNIT NUMBER	BUILDING UNIT DISTANCE	BUILDING NUMBER	BUILDING DISTANCE	PARCEL #	OWNER	MAILING ADDRESS	MAIL CITY	MAIL STATE	MAIL ZIP
P18	-	-	-	-	147119000086	MARTIN MARIETTA MATERIALS INC C/O BADEN TAX MANAGEMENT	PO BOX 8040	FORT WAYNE	IN	468988040
P19	-	-	-	-	147119400019	CITY AND COUNTY OF DENVER BOARD OF WATER COMMISSIONERS	1600 W 12TH AVE	DENVER	CO	802043412
P20	-	-	-	-	147119100005	CITY AND COUNTY OF DENVER BOARD OF WATER COMMISSIONERS	1600 W 12TH AVE	DENVER	CO	802043412
P21	BU17	±1845' S	B19, B22	±1746' S, ±1813' S	147129200110	WSDB 1812 LLC	14689 HARRISON ST	BRIGHTON	CO	806027749
P22	-	-	-	-	147119400018	NOBLE ENERGY INC C/O K E ANDREWS	1900 DALROCK RD	ROWLETT	TX	750885526
P23	BU14, BU19	±1438' N, ±1968' N	B17, B18, B20, B24, B26	±1687' N, ±1692' N, ±1750' N, ±1865' N, ±1970' N	147120000031	2550 DENVER PARTNERS LLC C/O ALTERRA PROPERTY GROUP LLC	414 S 16TH ST STE 100	PHILADELPHIA	PA	191461989
P24	-	-	-	-	147120200001	VILLANO ROBERT P (1/6 INT.) VILLANO BROTHERS PROPERTIES INC-2/3 INT	13050 COUNTY ROAD 10	FORT LUPTON	CO	806218308
P25	-	-	B14, B15	±1522' N, ±1629' NE	147120202001	ENERGY PROPERTY PARTNERS LLC ATTN PROPERTY TAX DEPT	PO BOX 1431	DUNCAN	OK	735341431
P26	INFORMATION NOT AVAILABLE									
P27	BU13, BU15	±1426' S, ±1467' S	B23	±1857' S	147130100108	K&S VENTURES LLC	PO BOX 4686	PARKER	CO	801341460
P28	-	-	-	-	147129201001	VESTAS AMERICAN WIND TECHNOLOGY INC	1417 NW EVERETT ST	PORTLAND	OR	972092652
P29	-	-	-	-	147130100109	XERNIE J. MERITT WEALTH MANAGEMENT TRUST CAO LIFETIME TRUST (1/6 INT), ET AL.	12982 COUNTY ROAD 6	BRIGHTON	CO	806039363
P30	-	-	B16	±1677' W	147119000011	JOHN C. NOLAND REVOCABLE TRUST & GWENDOLYN S. NOLAND	11314 QUIVAS WAY	WESTMINSTER	CO	802342619
P31	-	-	-	-	147119000083	RAMON & MELISSA B. RETANA	1461 E 119TH PL	DENVER	CO	802331206
P32	-	-	-	-	147119000084	RAMON & MELISSA B. RETANA	862 FREESTONE ST	LOCHBUIE	CO	806037790
P33	-	-	-	-	147119400016	NEW VISION MHP LLC (35% INT) NEW VISION SB LLC	4040 MACARTHUR BLVD STE 300	NEWPORT BEACH	CA	926602500
P34	BU18	±1932' S	B25	±1945' S	147129200114	DORENE L. TADEHARA	1772 COUNTY ROAD 27	BRIGHTON	CO	806039333
P35	-	-	-	-	147119100004	CITY AND COUNTY OF DENVER BOARD OF WATER COMMISSIONERS	1600 W 12TH AVE	DENVER	CO	802043412
P36	-	-	-	-	147119400017	NEW VISION MHP LLC (35% INT) NEW VISION SB LLC	4040 MACARTHUR BLVD STE 300	NEWPORT BEACH	CA	926602500



# Our Commitment To You

We strive to make our activities compatible with the surrounding community and use various mitigation techniques to reduce the temporary impacts associated with development. Our team designs each location after careful consideration of the area's specific attributes. Although some of our operations are conducted 24/7, we aim to minimize non-essential work during the night. For each well pad, we deploy the following strategies to mitigate possible impacts including:

## Our Best Practices and Mitigation Measures

### Noise



We use upgraded drilling rigs with noise-reducing features and quiet hydraulic fracturing technology. We will also use an electric-powered drilling rig, which also reduces noise. These features reduce the noise from our operations. In addition to mitigating noise at the source, we will also install sound walls.

### Light



We use light-emitting diode (LED) lights strategically oriented away from homes, making our operations less visible to our neighbors.

### Odor



To counteract any potential hydrocarbon odor during our drilling operations, we use low-aromatic, synthetic drilling fluid.

### Dust



We work to mitigate dust by applying dust suppression to the roads as needed. Various techniques include installing tracking pads and sediment traps, hydro mulching and/or hydroseeding topsoil piles, seeding disturbed soils, and placing and compacting a gravel layer on the working pad surfaces and access roads.



# Our Commitment To You

## Our Best Practices and Mitigation Measures

### Air Quality

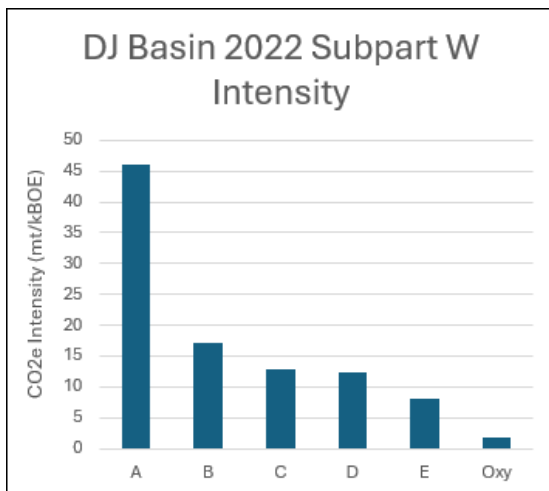
To ensure the wellbeing of you and your family and those living and working near our operations, we take action to reduce emissions and monitor air quality.

#### Reducing Emissions

To reduce greenhouse gas emissions and utilize the valuable energy resources we produce, we select equipment and design our locations and procedures to minimize emissions. As you can see in the graph, we have been successful in our efforts.

1. Occidental is the first U.S. oil and gas company to endorse [The World Bank's Zero Routine Flaring by 2030 initiative](#). In Colorado, we have already achieved zero routine flaring.
2. During horizontal drilling, we will use electric-powered engines. In addition, the hydraulic fracturing pumping equipment will be powered by natural gas engines. These power sources significantly reduce emissions. We ensure our operations are efficient and environmentally friendly by leveraging advanced technologies and sustainable practices.
3. Our innovative tankless production facility reduces air emissions in several ways. By eliminating oil and water storage tanks, we significantly lowers facility emissions. Transporting oil and water off-site through a pipeline further reduces emissions associated with truck traffic. The facility design also uses compressed air to operate pneumatic controllers, which regulate pressure, flow, temperature, and liquid levels in over 90% of our production. Using compressed air eliminates emissions that typically come from natural gas-driven pneumatic controllers.

As shown in the graph below, we have the lowest emissions inventory intensity of any oil and gas operator in the DJ Basin and have already met the 2030 Colorado Department Public Health and Environment (CDPHE) Regulation 22 target.



#### Monitoring Emissions

During drilling and completions, independent third-party environmental air quality experts perform continuous air quality monitoring. The Colorado Department of Public Health and Environment (CDPHE) and the Energy & Carbon Management Commission (ECMC) approve our air monitoring program and receive monthly reports. You can find the monthly monitoring reports created by the third-party consultant on our webpage under Project Updates.

Independent third-party air quality experts use traditional and innovative technologies to add context to and validate the data collected. Air monitoring stations include a weather station, a hydrocarbon analyzer, and carbon sorbent tubes. In addition, strategically placed air canisters may supplement data from the air monitoring stations. Air samples are collected and analyzed according to EPA standards. The results are compared to health guideline values set by the CDPHE.

Air monitoring data is collected continuously and is monitored 24/7 by our Integrated Operations Center (IOC). Our monitoring program establishes response and investigation levels designed to protect the health, safety, and welfare of communities, our employees, and the environment. Additionally, our 24/7 IOC ensures responses are both timely and effective.

To monitor emissions near our production facilities, we have an in-house emissions team that conducts leak detection and repair inspections. During the production phase, every facility is inspected periodically by trained individuals using a handheld infrared camera. We also use infrared camera-equipped drones and conduct frequent audio/visual/olfactory inspections to detect and control emissions.



### Groundwater Protection

We conduct baseline water-quality sampling and construct double-walled produced water sumps and secondary containment for operations. Sensors between the walls of the water sumps and additional automation allow us to remotely monitor fluid levels and remotely shut in the wells if we detect an issue.





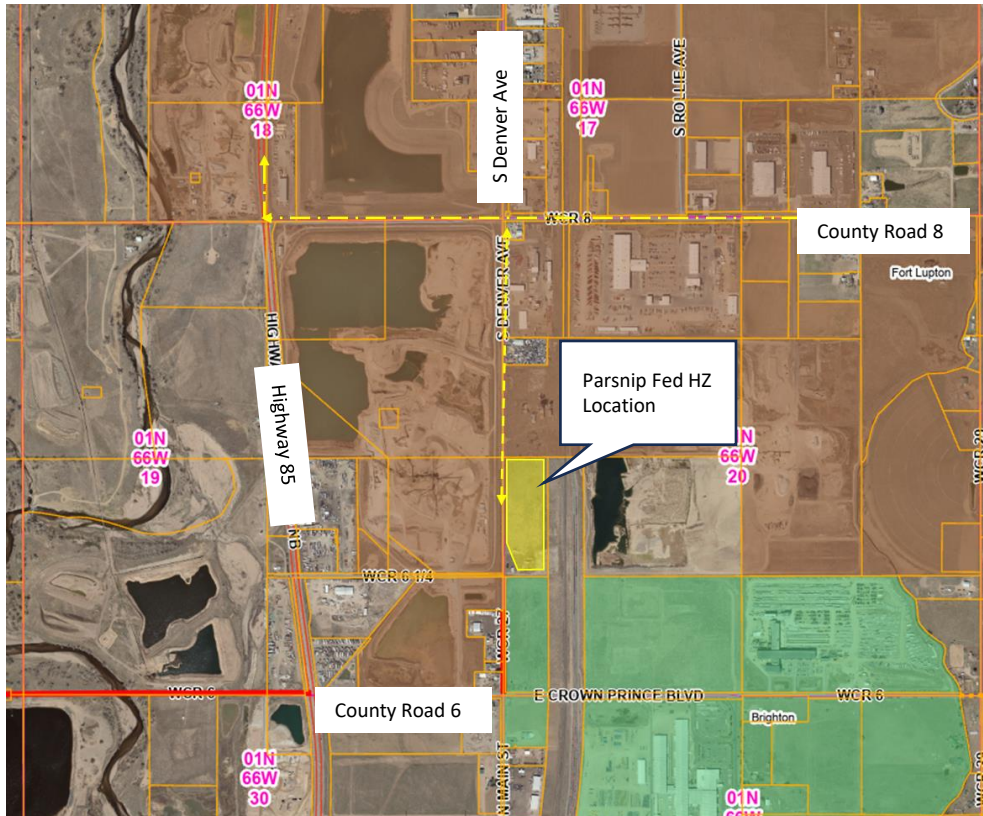
# Our Commitment To You

## Our Best Practices and Mitigation Measures

### Traffic Management Plan

One part of the comprehensive permitting process is developing a traffic management plan. This includes specific routes for all traffic coming to and leaving the proposed project locations. To access the location, drivers will utilize the roads shown below. Speed limits will be reduced to 10 mph on the access road and 5 mph once vehicles reach the well pad/facility.

We reduce traffic as much as possible through oil transfer and Water-On-Demand systems. The oil produced from our horizontal locations is transported off-site through a pipeline, eliminating the need for trucks. We transport the water used in hydraulic fracturing through our innovative Water-On-Demand pipeline system, further reducing truck traffic. Since its inception in 2012, these technologies have enabled us to eliminate 60 million miles of truck traffic from the roads in Weld County, reducing emissions, dust, road wear, and inconvenience to our neighbors. This system also mitigates our surface footprint by significantly reducing the tanks needed for water storage onsite during well completion. At this location, we estimate that our Water-On-Demand system will eliminate 94,806 truck trips.



	Phase	Work Activity	Estimated Start	Estimated End	Estimated Traffic Total	Estimated Traffic Per Day
1st Occupation	1	Pad Construction	Sep-2026	Oct-2026	2,302	77
	2	Surface Casing	Nov-2026	Dec-2026	372	34
	3	Horizontal Drilling	Dec-2026	Feb-2027	3,249	59
	4	Well Completions	Jul-2027	Aug-2027	13,105	312
	5	Production Facility Construction	Apr-2027	Aug-2027	935	9
2nd Occupation	2	Surface Drilling	Aug-2028	Aug-2028	372	34
	3	Horizontal Drilling	Sep-2028	Oct-2028	3,249	59
	4	Well Completions	Dec-2029	Jan-2030	13,105	320
	5	Production Facility Construction	Sep-2029	Jan-2030	935	9
	6	Interim Reclamation	Feb-2030	Aug-2030	3,405	19

# Phases of Energy Development



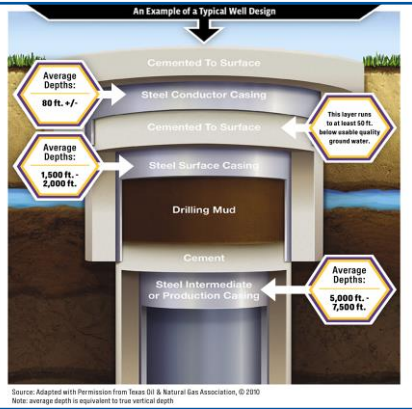
For more information, please visit [www.OxyColoradoStakeholder.com/Oil-and-Gas-101](http://www.OxyColoradoStakeholder.com/Oil-and-Gas-101)

## Pad Construction (30-45 days per pad) 1



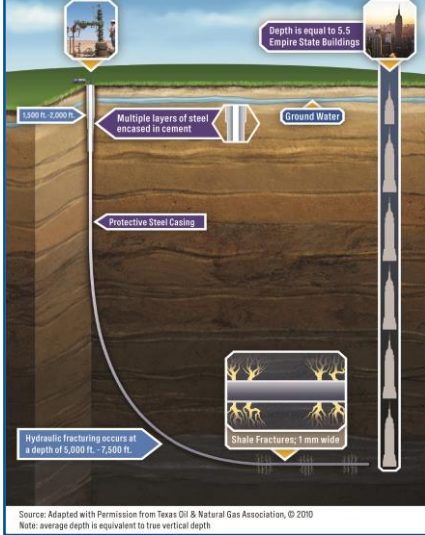
Standard construction equipment prepares the well site. A wall may be installed to reduce or minimize noise and light during development.

## Surface Casing Set (1-2 days per well) 2



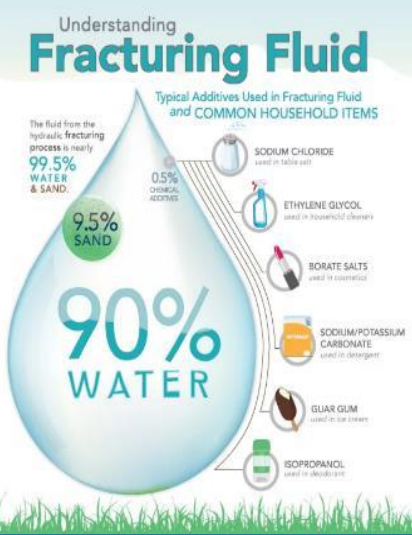
A drilling rig begins the underground construction process by installing steel pipe and cement (surface casing) to protect groundwater. Surface casing is set at least 50' below the aquifer, typically about 1,500'+ below the surface.

## Horizontal Drilling (4-6 days per well) 3



A production rig arrives and drills to a depth of 7,000 to 8,000 feet. The horizontal portion of the wellbore can extend more than two miles. Additional layers of protective steel casing and cement are installed.

## Well Completions (6-9 days per well) 4



**Hydraulic Fracturing:** A safe, highly engineered technology developed in the 1940s. Fluid is pumped over a mile below the earth's surface under pressure to create hairline fractures in the rocks.

**Flowback:** After fracturing, the wells are opened, and oil and gas flow into the mobile production facility.

**Well clean-out and Tubing:** The wells are cleaned out to remove excess sand and install the production tubing.

## Production Facility Construction (30-45 days per facility) 5



Production facilities are constructed adjacent to the wells to collect and separate the oil, natural gas, and water that are produced. Facility production is 30-45 days of work, completed in stages over about four months.

## Reclaim Well Site (60 days per pad) 6



Once development phases are complete, the pad is reclaimed to the largest extent possible to match the existing landscape. Each well will produce energy vital to the health and welfare of our communities for decades to come.





# Contacts



**Margaret Rowley**  
 Sr. Stakeholder Relations Analyst  
 1099 18<sup>th</sup> Street, 7<sup>th</sup> Floor, Denver, CO 80202  
 Office 720.929.4573  
[Coloradostakeholder@oxy.com](mailto:Coloradostakeholder@oxy.com)  
[www.OxyColoradoStakeholder.com](http://www.OxyColoradoStakeholder.com)

**Oxy Integrated Operations Center (IOC)**  
 970.515.1500  
 Real-time monitoring of wells, water tanks,  
 and production facilities  
 24 hours a day, 365 days a year



**Weld County Oil and Gas Energy  
 Department**  
 970.400.3580 | [oged@weldgov.com](mailto:oged@weldgov.com)  
[www.weldgov.com/Government/Departments/Oil-and-Gas-Energy](http://www.weldgov.com/Government/Departments/Oil-and-Gas-Energy)

For information about this project, please  
 contact us regarding PARSNIP FED HZ



**Energy & Carbon Management Commission  
 (ECMC)**  
 303.894.2100  
[ecmc.state.co.us](http://ecmc.state.co.us)