

November 2024



Dear Neighbor,

We are writing to notify you that Kerr McGee Oil & Gas Onshore, LP, an Oxy USA Inc. subsidiary, will soon begin the next phases of developing oil and natural gas wells within 2,000 feet of your property. In our commitment to being a good neighbor, we provide frequent and transparent information, seek community feedback, safeguard the environment, and protect the health and safety of employees and communities.

Work Activity, Location, and Schedule

Enclosed, you will find information about the phases of energy development and our well locations. Please visit our website for more information on oil and natural gas development.

Below is a summary of the planned work and the estimated schedule:

Phase	Work Activity	Estimated Start	Estimated End
1	Prepare location and install mitigations	Late December 2024	Late February 2025
2	Drill and install surface casing to protect groundwater	Late February 2025	Mid-March 2025
3	Horizontal drilling	Late March 2025	Mid-July 2025
4 - 6	Well completions, facility construction, and interim reclamation	We will send additional notices before starting phases 4 through 6	

For up-to-date information on timing, please visit:  
[www.OxyColoradoStakeholder.com/project-updates](http://www.OxyColoradoStakeholder.com/project-updates)

Standard Practices and Mitigation Strategies

Our standard practices align with the guidelines of Weld County, the Energy & Carbon Management Commission (ECMC), and the Colorado Department of Public Health and Environment (CDPHE). We carefully planned this location's development and mitigation techniques to minimize any temporary impacts from our operations. Currently, mitigations during development include a robust traffic management plan, sound wall installation, and continuous sound and air monitoring.

To access the most up-to-date information on current projects, please visit the "Project Updates" tab at [www.OxyColoradoStakeholder.com/project-updates](http://www.OxyColoradoStakeholder.com/project-updates).

Sincerely,

**Oxy Stakeholder Relations**

1099 18th Street, Suite 700, Denver, CO 80202

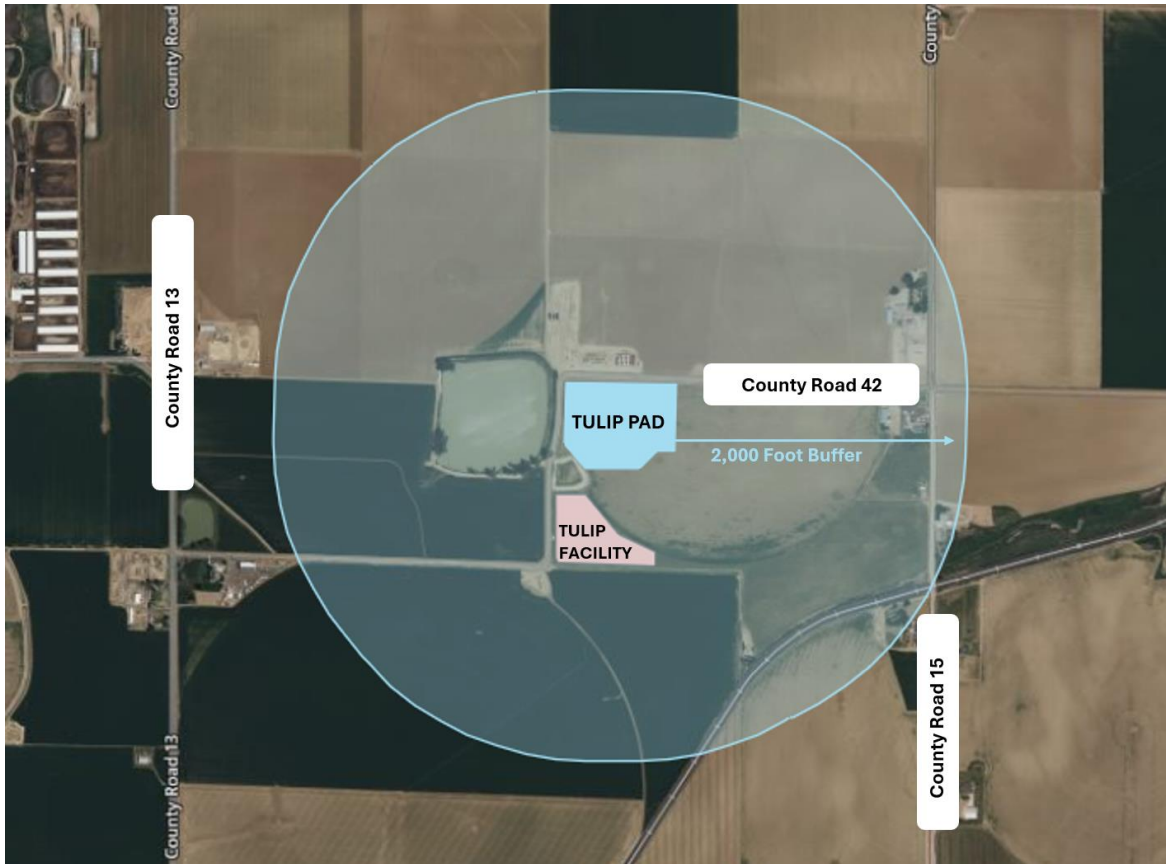
866.248.9577

[ColoradoStakeholder@oxy.com](mailto:ColoradoStakeholder@oxy.com)

[www.OxyColoradoStakeholder.com](http://www.OxyColoradoStakeholder.com)

# AREA OF OPERATION

## TULIP WELL PAD & FACILITY PAD



<b>Location:</b>	County Road 42 & County Road 15 Weld County, CO
<b>Parcel #:</b>	105930101005
<b>Cross Streets:</b>	County Road 42 & County Road 15
<b>Legal:</b>	SECTION 30, TOWNSHIP 4 NORTH, RANGE 67 WEST, 6TH P.M., WELD COUNTY, COLORADO
<b>Pad Description:</b>	TULIP, 22 wells
<b>Weld County Permit #:</b>	1041WOGLA24-0018 (Well Pad) 1041 WOGLA24-0019 (Facility Pad)
<b>ECMC Permit ID:</b>	403714908
<b>Weld County Oil and Gas Energy Department:</b>	Stephanie Frederick
	1402 N. 17th Avenue, Greeley, CO
	sfrederick@weld.gov   970.400.3581
<b>Energy &amp; Carbon Management Commission:</b>	<a href="https://ecmc.state.co.us">https://ecmc.state.co.us</a>   303.894.2100

**For more information on oil and natural gas development or project updates, please visit [www.OxyColoradoStakeholder.com](http://www.OxyColoradoStakeholder.com)**

# Phases of Energy Development

For more information, please visit [www.OxyColoradoStakeholder.com/oil-and-gas-101](http://www.OxyColoradoStakeholder.com/oil-and-gas-101)

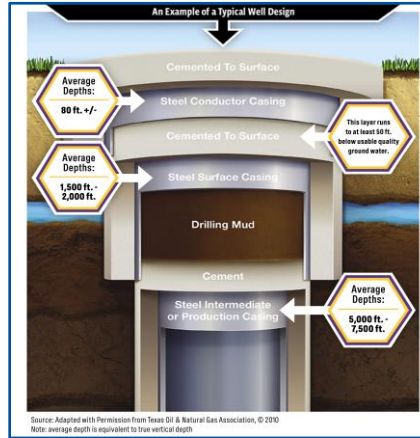


## Pad Construction (30-45 days per pad)



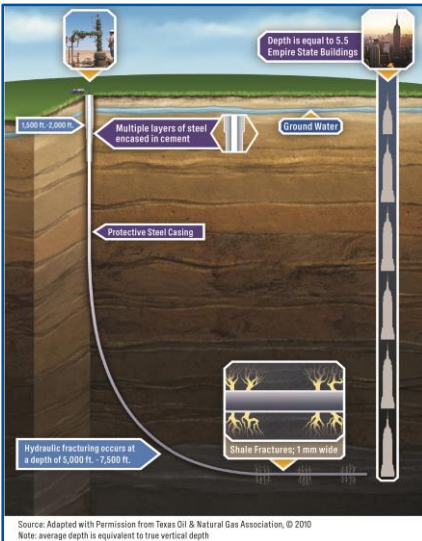
Standard construction equipment prepares the well site. A wall may be installed to reduce or minimize noise and light during development.

## Surface Casing Set (1-2 days per well)



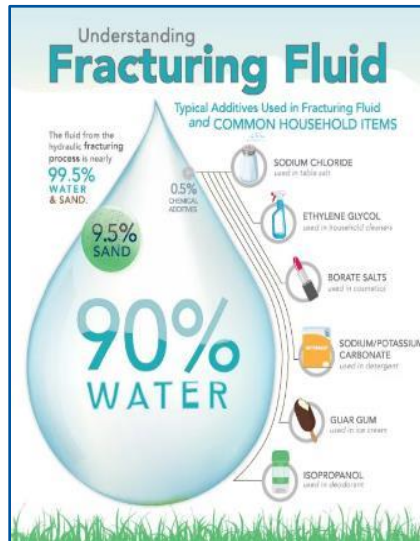
A drilling rig begins the underground construction process by installing steel pipe and cement (surface casing) to protect groundwater. Surface casing is set at least 50' below the aquifer, typically about 1,000' below the surface.

## Horizontal Drilling (4-6 days per well)



A production rig arrives and drills to a depth of 7,000 to 8,000 feet. The horizontal portion of the wellbore can extend more than two miles. Additional layers of protective steel casing and cement are installed.

## Well Completions (6-9 days per well)



**Hydraulic Fracturing:** A safe, highly engineered technology developed in the 1940s. Fluid is pumped over a mile below the earth's surface under pressure to create hairline fractures in the rocks.

**Flowback:** After fracturing, the wells are opened, and oil and gas flow into the mobile production facility.

**Well clean-out and Tubing:** The wells are cleaned out to remove excess sand and install the production tubing.

## Production Facility Construction (30-45 days per facility)



Production facilities are constructed adjacent to the wells to collect and separate the oil, natural gas, and water that are produced. Facility production is 30-45 days of work, completed in stages over about four months.

## Reclaim Well Site (60 days per pad)



Once development phases are complete, the pad is reclaimed to the largest extent possible to match the existing landscape. Each well will produce energy vital to the health and welfare of our communities for decades to come.