

May 2024



Dear Neighbor,

We are writing to notify you that Kerr McGee Oil & Gas Onshore LP, an Oxy USA Inc. subsidiary, is preparing to submit an application for a Weld County Oil and Gas Location Assessment (WOGLA) for a project in your community. In our commitment to being a good neighbor, we provide frequent and transparent information, seek community feedback, safeguard the environment, and protect the health and safety of employees and communities.

Description of the project

Enclosed, you will find information regarding the Tulip project, consisting of a well pad (22 wells) and an adjacent production facility pad. The permitting process requires these to be permitted separately as they are located on separate adjacent parcels. These notices are combined to represent the project more clearly. Therefore, certain pages of this document describe distinct aspects of the project. Please find headings for "Well Pad" and "Facility Pad" as indicators for which aspect of the project that a page details.

The timeline for development is based on many factors, including obtaining the required permits. Operational activities will occur in two separate periods. At this time, we estimate that drilling will start between January and March 2025. We commit to keeping you updated throughout the process. Additionally, you can find project updates on our website and can connect with a member of our team using the contact information listed below.

Standard practices and mitigation strategies

Our standard practices align with the guidelines of Weld County, the Energy & Carbon Management Commission (ECMC), and the Colorado Department of Public Health and Environment (CDPHE). We carefully planned this location's development and mitigation techniques to minimize any temporary impacts from our operations. Currently, mitigations during development include a robust traffic management plan, sound wall installation, and continuous sound and air monitoring. The ECMC was known as the Colorado Oil and Gas Conservation Commission (COGCC) prior to July 2023.

Our team members will continue to work diligently to plan construction and operations with you in mind. We welcome your feedback and can be contacted anytime for questions and comments by email, phone, or mail. We will also consider all reasonable mitigation measures proposed to minimize adverse impacts of the proposed oil and gas location.

Next steps

This project must undergo a comprehensive permitting process at both the local and state level. We will keep our website updated, and you will be notified by mail throughout the process. Please reach out to us or Weld County to discuss this project or to set up a meeting. We look forward to working with you.

Oxy Stakeholder Relations

1099 18th Street, Suite 700

Denver, CO 80202

866.248.9577

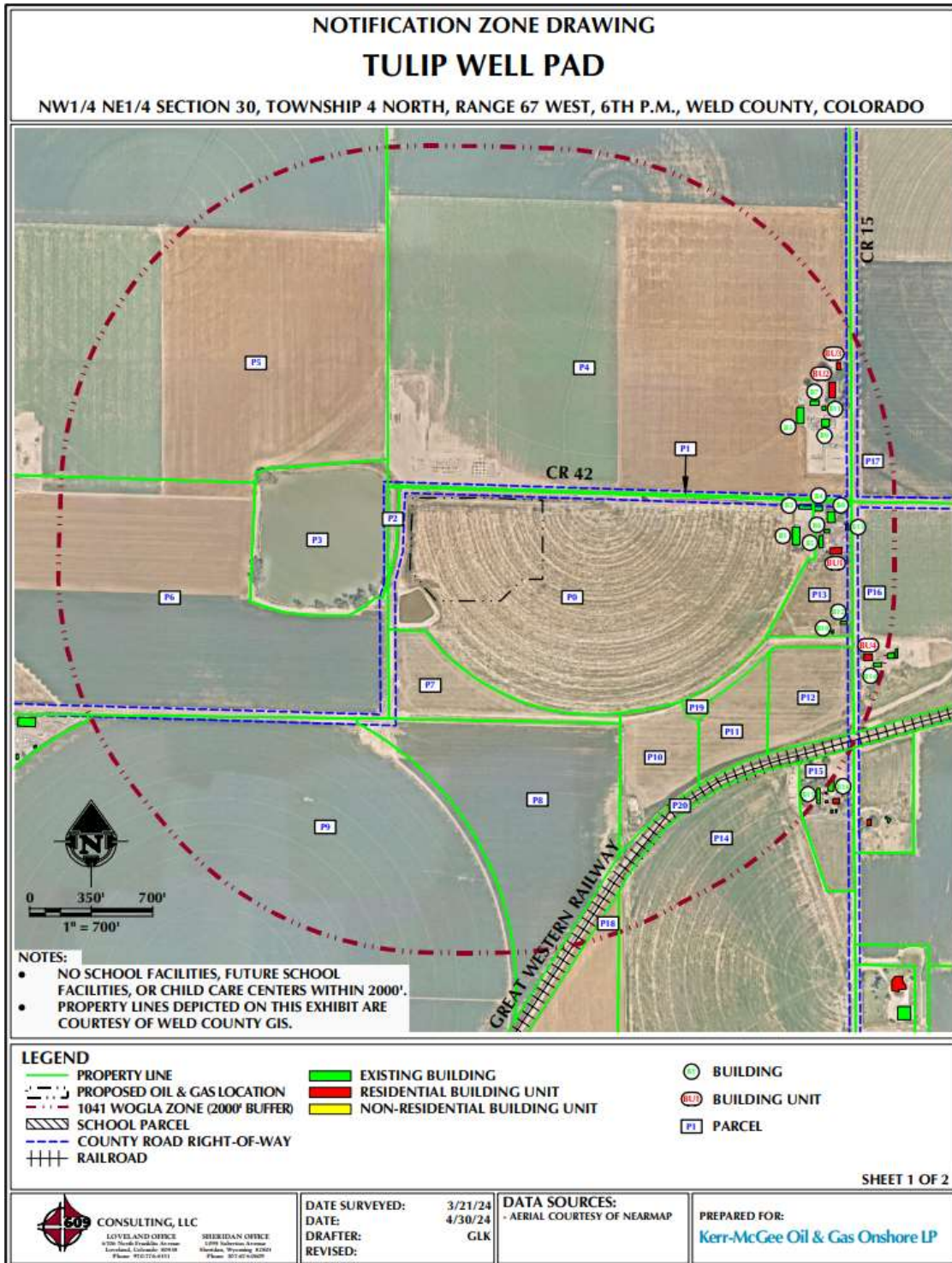
ColoradoStakeholder@oxy.com

www.OxyColoradoStakeholder.com



New Energy Development

Project Location (Well Pad)



Pad Name	Parcel #	Location	Disturbed Acreage	Operation Acreage
Tulip (Well Pad Location)	105930101005	Section 30, Township 4 North, Range 67 West, 6TH P.M., Weld County, Colorado	9.25 Acres (During Development)	2.96 Acres (For life of wells)

Notification Zone (Well Pad)



ID	PARCEL #	OWNER	MAILING ADDRESS	MAIL CITY	MAIL STATE	MAIL ZIP
P0	105930101005	OLSON BROS LP C/O ROGER E OLSON	PO BOX 86	JOHNSTOWN	CO	805340086
P1	105919000024	OLSON BROS LP C/O ROGER E OLSON	PO BOX 86	JOHNSTOWN	CO	805340086
P2	105930000017	CHANDLER FARMS JOHNSTOWN LLC C/O JOHN T CHANDLER	7835 EAGLE RANCH ROAD	FORT COLLINS	CO	805288959
P3	105919000022	CHANDLER FARMS JOHNSTOWN LLC C/O JOHN T CHANDLER	7835 EAGLE RANCH ROAD	FORT COLLINS	CO	805288959
P4	105919000018	CHANDLER FARMS JOHNSTOWN LLC C/O JOHN T CHANDLER	7835 EAGLE RANCH ROAD	FORT COLLINS	CO	805288959
P5	105919000003	NYGREN FAMILY FARMS LLLP	417 SETTLER WAY	JOHNSTOWN	CO	805347819
P6	105930000004	NYGREN FAMILY FARMS LLLP	417 SETTLER WAY	JOHNSTOWN	CO	805347819
P7	105930101004	OLSON BROS LP	PO BOX 86	JOHNSTOWN	CO	805340086
P8	105930000047	STEVE SHULTZ	21475 COUNTY ROAD 19	MILLIKEN	CO	805439411
P9	105930000048	STEVE SHULTZ	21475 COUNTY ROAD 19	MILLIKEN	CO	805439411
P10	105930101003	SPRING MEADOWS DEVELOPMENT LLC	19480 COUNTY ROAD 15	JOHNSTOWN	CO	805349220
P11	105930101002	SPRING MEADOWS DEVELOPMENT LLC	19480 COUNTY ROAD 15	JOHNSTOWN	CO	805349220
P12	105930101001	SPRING MEADOWS DEVELOPMENT LLC	19480 COUNTY ROAD 15	JOHNSTOWN	CO	805349220
P13	105930000007	TAMMY M & JAYSON D GARCIA	19943 COUNTY ROAD 15	JOHNSTOWN	CO	805349219
P14	105930000019	OLSON BROS LP C/O ROGER E OLSON	PO BOX 86	JOHNSTOWN	CO	805340086
P15	105930000018	CONNIE C & DANA C WILLS	19671 COUNTY ROAD 15	JOHNSTOWN	CO	805349219
P16	105929000015	KRISTINE KAY & DELBERT ARTHUR KIRBY	19822 COUNTY ROAD 15	JOHNSTOWN	CO	805349220
P17	105920000019	BINDER FAMILY FARMS LLC	9783 COUNTY ROAD 46 1/2	MILLIKEN	CO	805439403
P18	105930000045	STEVE SHULTZ	21475 COUNTY ROAD 19	MILLIKEN	CO	805439411
P19	INFORMATION NOT AVAILABLE					
P20	INFORMATION NOT AVAILABLE					

Our Commitment To You

Our Best Practices and Mitigation Measures



Traffic Management Plan (Well Pad)

One part of the comprehensive permitting process is developing a traffic management plan. This includes specific routes for all traffic coming to and leaving the proposed project location. To access the location, drivers will utilize the roads as shown below. Speed limits will be reduced to 10 mph on the access road and five mph once vehicles reach the location.

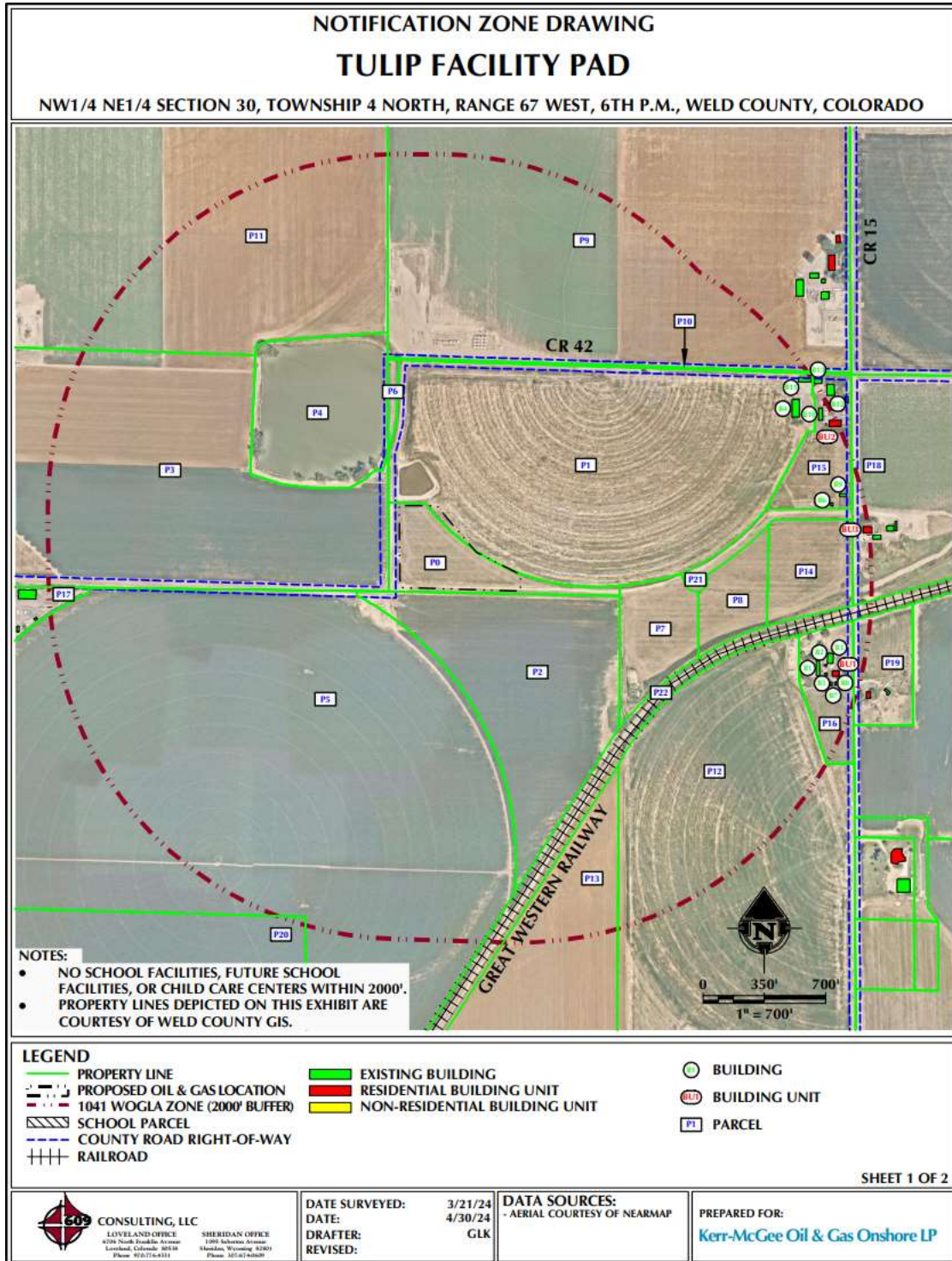
We reduce traffic as much as possible through oil transfer and Water-On-Demand systems. The oil produced from our horizontal locations is transported off-site through a pipeline, eliminating the need for trucks. We transport the water used in hydraulic fracturing through our innovative Water-On-Demand pipeline system, further reducing truck traffic. Since its inception in 2012, these technologies have enabled us to eliminate 60 million miles of truck traffic from the roads in Weld County, reducing emissions, dust, road wear, and inconvenience to our neighbors. This system also mitigates our surface footprint by significantly reducing the tanks needed for water storage onsite during well completion. At this location, we estimate that our Water-On-Demand system will eliminate 155,840 truck trips.





New Energy Development

Project Location (Facility Pad)



Pad Name	Parcel #	Location	Disturbed Acreage	Operation Acreage
Tulip (Facility Location)	105930101004	Section 30, Township 4 North, Range 67 West, 6TH P.M., Weld County, Colorado	4.93 Acres (During Development)	2.06 Acres (For life of wells)

Notification Zone (Facility Pad)



ID	PARCEL #	OWNER	MAILING ADDRESS	MAIL CITY	MAIL STATE	MAIL ZIP
P0	105930101004	OLSON BROS LP	PO BOX 86	JOHNSTOWN	CO	805340086
P1	105930101005	OLSON BROS LP C/O ROGER E OLSON	PO BOX 86	JOHNSTOWN	CO	805340086
P2	105930000047	STEVE SHULTZ	21475 COUNTY ROAD 19	MILLIKEN	CO	805439411
P3	105930000004	NYGREN FAMILY FARMS LLLP	417 SETTLER WAY	JOHNSTOWN	CO	805347819
P4	105919000022	CHANDLER FARMS JOHNSTOWN LLC C/O JOHN T CHANDLER	7835 EAGLE RANCH ROAD	FORT COLLINS	CO	805288959
P5	105930000048	STEVE SHULTZ	21475 COUNTY ROAD 19	MILLIKEN	CO	805439411
P6	105930000017	CHANDLER FARMS JOHNSTOWN LLC C/O JOHN T CHANDLER	7835 EAGLE RANCH ROAD	FORT COLLINS	CO	805288959
P7	105930101003	SPRING MEADOWS DEVELOPMENT LLC	19480 COUNTY ROAD 15	JOHNSTOWN	CO	805349220
P8	105930101002	SPRING MEADOWS DEVELOPMENT LLC	19480 COUNTY ROAD 15	JOHNSTOWN	CO	805349220
P9	105919000018	CHANDLER FARMS JOHNSTOWN LLC C/O JOHN T CHANDLER	7835 EAGLE RANCH ROAD	FORT COLLINS	CO	805288959
P10	105919000024	OLSON BROS LP C/O ROGER E OLSON	PO BOX 86	JOHNSTOWN	CO	805340086
P11	105919000003	NYGREN FAMILY FARMS LLLP	417 SETTLER WAY	JOHNSTOWN	CO	805347819
P12	105930000019	OLSON BROS LP C/O ROGER E OLSON	PO BOX 86	JOHNSTOWN	CO	805340086
P13	105930000045	STEVE SHULTZ	21475 COUNTY ROAD 19	MILLIKEN	CO	805439411
P14	105930101001	SPRING MEADOWS DEVELOPMENT LLC	19480 COUNTY ROAD 15	JOHNSTOWN	CO	805349220
P15	105930000007	TAMMY M & JAYSON D GARCIA	19943 COUNTY ROAD 15	JOHNSTOWN	CO	805349219
P16	105930000018	CONNIE C & DANA C WILLS	19671 COUNTY ROAD 15	JOHNSTOWN	CO	805349219
P17	105930000046	THOMAS CATE & LORI CATE TRUST	6042 COUNTY ROAD 42	JOHNSTOWN	CO	805349349
P18	105929000015	KRISTINE KAY & DELBERT ARTHUR KIRBY	19822 COUNTY ROAD 15	JOHNSTOWN	CO	805349220
P19	105929000031	JILL A BATY	PO BOX 148	JOHNSTOWN	CO	805340148
P20	105930000042	STEVEN E SHULTZ	21475 COUNTY ROAD 19	MILLIKEN	CO	805439411
P21	INFORMATION NOT AVAILABLE					
P22	INFORMATION NOT AVAILABLE					

Our Commitment To You

Our Best Practices and Mitigation Measures



Traffic Management Plan (Facility Pad)

One part of the comprehensive permitting process is developing a traffic management plan. This includes specific routes for all traffic coming to and leaving the proposed project location. To access the location, drivers will utilize the roads as shown below. Speed limits will be reduced to 10 mph on the access road and five mph once vehicles reach the location.



Our Commitment To You

Our Best Practices and Mitigation Measures



We strive to make our activities compatible with the surrounding community and use various mitigation techniques to reduce the temporary impacts associated with development. Our team designs each location after careful consideration of the area's specific attributes. Although some of our operations are conducted 24/7, we aim to minimize non-essential work during the night. For each well pad, we deploy the following strategies to mitigate possible impacts including:

Noise



We use upgraded drilling rigs with noise-reducing features and quiet hydraulic fracturing technology. These features reduce the noise from our operations. In addition to mitigating noise at the source, we may also install sound walls, as needed, when we operate near communities.

Light



We use Light-emitting Diode (LED) lights strategically oriented away from homes, making our operations less visible to our neighbors.

Odor



To counteract any potential hydrocarbon odor during our drilling operations, we proactively add an odor neutralizer to the drilling fluid system.

Dust



We work to mitigate dust by applying dust suppression to the roads as needed. Various techniques to be used include installing tracking pads and sediment traps, hydro mulching and/or hydroseeding topsoil piles, seeding disturbed soils, and placing and compacting a gravel layer on the working pad surfaces and access roads.



Our Commitment To You

Our Best Practices and Mitigation Measures

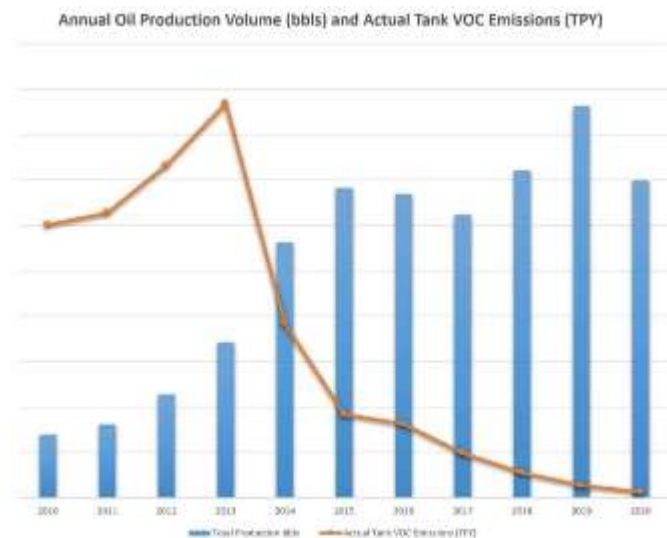
Air Quality

To ensure the wellbeing of you and your family and those living and working near our operations, we take action to reduce emissions and monitor air quality.

Reducing Emissions

To reduce greenhouse gas emissions and utilize the valuable energy resources we produce, we select equipment and design our locations and procedures to minimize emissions. As you can see in the graph, we have been successful in our efforts.

1. Oxy is the first U.S. oil and gas company to endorse [The World Bank's Zero Routine Flaring by 2030 initiative](#). In Colorado, we have already achieved zero routine flaring.
2. During drilling, over 90% of the power comes from natural gas engines. In addition, the hydraulic fracturing pumping equipment is 100% powered by Tier IV diesel engines. Tier IV engines meet the latest and most stringent requirements for off-road diesel engines as designated by the U.S. Environmental Protection Agency (EPA).
3. Our innovative tankless production facility reduces air emissions in several ways. Tankless means we eliminated oil storage tanks, which significantly lowers facility emissions. Transporting oil off-site through a pipeline further reduces emissions associated with truck traffic. The design also uses compressed air to operate pneumatic controllers, which regulate pressure, flow, temperature, and liquid levels, on over 90% of our production. Using compressed air eliminates emissions that typically come from natural gas-driven pneumatic controllers.



Monitoring Emissions

During drilling and completions, independent third-party environmental air quality experts perform continuous air quality monitoring. The Colorado Department of Public Health and Environment (CDPHE) and the Energy & Carbon Management Commission (ECMC) approve our air monitoring program and receive monthly reports. You can find the monthly monitoring reports created by the third-party consultant on our webpage under Project Updates.

Independent third-party air quality experts use traditional and innovative technologies to add context to and validate the data collected. Air monitoring stations include a weather station, a hydrocarbon analyzer, and carbon sorbent tubes. In addition, strategically placed air canisters may supplement data from the air monitoring stations. Air samples are collected and analyzed according to EPA standards. The results are compared to health guideline values set by the CDPHE.

Air monitoring data is collected continuously and is monitored 24/7 by our Integrated Operations Center (IOC). Our monitoring program establishes response and investigation levels designed to protect the health, safety, and welfare of communities, our employees, and the environment. Additionally, our 24/7 IOC ensures responses are both timely and effective.

To monitor emissions near our production facilities, we have an in-house emissions team that conducts leak detection and repair inspections. During the production phase, every facility is inspected periodically by trained individuals using a handheld infrared camera. We also use infrared camera-equipped drones and conduct frequent audio/visual/olfactory inspections to detect and control emissions.



Groundwater Protection

We conduct baseline water-quality sampling and construct double-walled produced water sumps and secondary containment for operations. Sensors between the walls of the water sumps and additional automation allow us to remotely monitor fluid levels and remotely shut in the wells if we detect an issue.

Phases of Energy Development



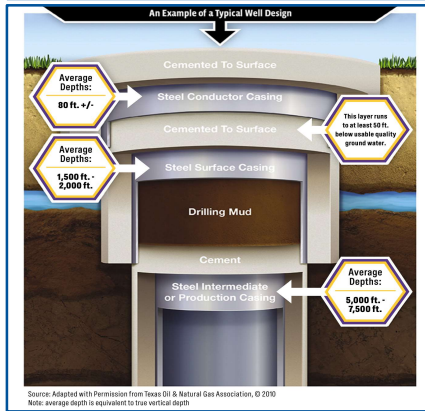
For more information, please visit www.OxyColoradoStakeholder.com/Oil-and-Gas-101

1 Pad Construction (30-45 days per pad)

Standard construction equipment prepares the well site. A wall may be installed to reduce or minimize noise and light during development.



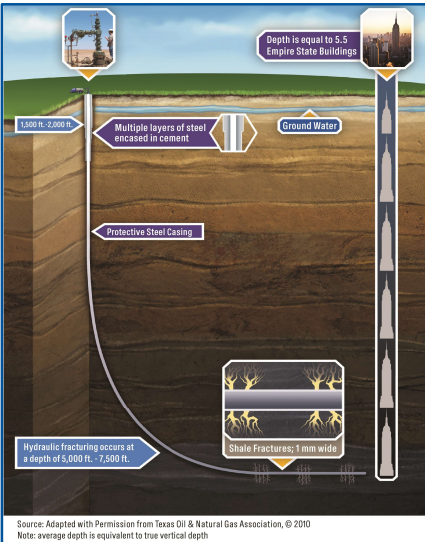
2 Surface Casing Set (1-2 days per well)



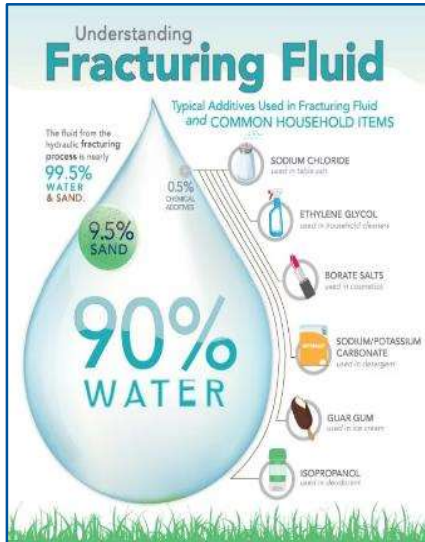
A drilling rig begins the underground construction process by installing steel pipe and cement (surface casing) to protect groundwater. Surface casing is set at least 50' below the aquifer, typically about 1,500+ feet below the surface.

3 Horizontal Drilling (4-6 days per well)

A production rig arrives and drills to a depth of 7,000 to 8,000 feet. The horizontal portion of the wellbore can extend more than two miles. Additional layers of protective steel casing and cement are installed.



4 Well Completions (6-9 days per well)



Hydraulic Fracturing: A safe, highly engineered technology developed in the 1940s. Fluid is pumped over a mile below the earth's surface under pressure to create hairline fractures in the rocks.

Flowback: After fracturing, the wells are opened, and oil and gas flow into the mobile production facility.

Well clean-out and Tubing: The wells are cleaned out to remove excess sand and install the production tubing.

5 Production Facility Construction (30-45 days per facility)

Production facilities are constructed adjacent to the wells to collect and separate the oil, natural gas, and water that are produced. Facility production is 30-45 days of work, completed in stages over about four months.



6 Reclaim Well Site (60 days per pad)



Once development phases are complete, the pad is reclaimed to the largest extent possible to match the existing landscape. Each well will produce energy vital to the health and welfare of our communities for decades to come.



Contacts



OXY Occidental

Colorado Response Line



1.866.248.9577
 ColoradoStakeholder@oxy.com



Stephanie Madrid
 Sr. Stakeholder Relations Analyst
 1099 18th Street, 7th Floor, Denver, CO 80202
 Office 970.515.1556
Coloradostakeholder@oxy.com
www.OxyColoradoStakeholder.com

Oxy Integrated Operations Center (IOC)
 970.515.1500
 Real-time monitoring of wells, water tanks,
 and production facilities
 24 hours a day, 365 days a year



**Weld County Oil and Gas Energy
 Department**
 970.400.3580 | oged@Weld.gov
www.weldgov.com/Government/Departments/Oil-and-Gas-Energy
 For information about the project, please
 contact us regarding Tulip



**Energy & Carbon Management Commission
 (ECMC)**
 303.894.2100
ecmc.state.co.us